

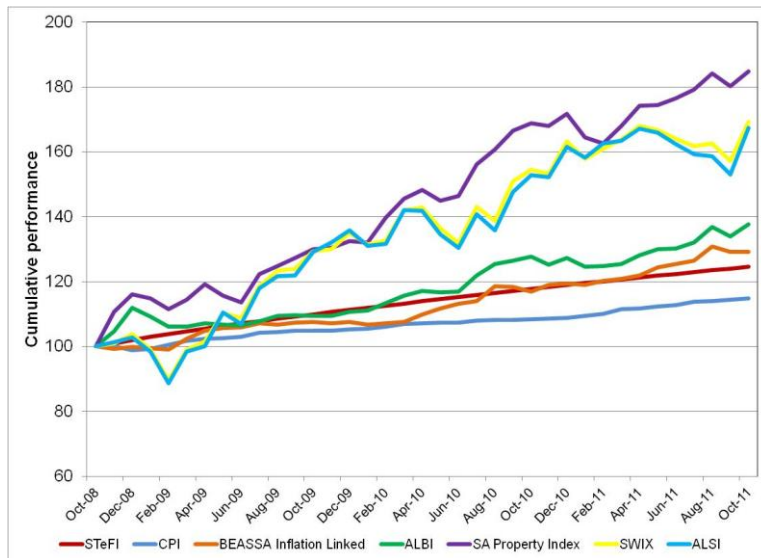
Local Market Summary

31 October 2011

Calendar Year

	STeFI	CPI	Inflation Linked Bonds	ALBI	SA Property	SWIX	ALSI
2007	9.35%	8.98%	9.16%	4.21%	26.52%	18.06%	19.18%
2008	11.69%	9.51%	13.62%	16.98%	-4.47%	-21.67%	-23.25%
2009	9.13%	6.33%	7.66%	-0.98%	14.07%	29.92%	32.13%
2010	6.93%	3.48%	10.97%	14.96%	29.62%	20.86%	18.98%
2011	4.77%	5.58%	8.08%	8.03%	7.69%	3.69%	3.49%

36 months Cumulative Performance



36 months Risk Return Comparison



Absolute Performance

	STeFI	CPI	Inflation Linked Bonds	ALBI	SA Property	SWIX	ALSI
1 month	0.47%	0.42%	-0.12%	2.75%	2.55%	7.66%	9.35%
2 months	0.92%	0.85%	-1.35%	0.60%	0.39%	4.09%	5.40%
3 months	1.40%	1.02%	2.00%	4.11%	3.15%	4.60%	5.06%
4 months	1.88%	1.88%	2.91%	5.63%	4.80%	3.05%	2.97%
6 months	2.83%	2.85%	5.89%	7.32%	6.14%	0.67%	0.10%
9 months	4.25%	5.11%	8.54%	10.38%	12.40%	7.21%	5.76%
1 year	5.83%	5.95%	10.38%	7.71%	9.56%	9.54%	9.40%
2 years	6.48%	4.67%	9.56%	12.16%	19.30%	14.34%	13.77%
3 years	7.61%	4.74%	8.87%	11.21%	22.73%	19.14%	18.71%
4 years	8.54%	6.54%	10.88%	9.32%	9.70%	4.43%	3.69%
5 years	8.64%	6.81%	10.20%	8.94%	15.82%	10.51%	9.74%

36 months Absolute Risk Comparison

Risk statistics	STeFI	CPI	Inflation Linked Bonds	ALBI	SA Property	SWIX	ALSI
Standard Deviation	0.54%	1.53%	4.35%	7.01%	10.88%	16.03%	17.33%
Upside Deviation	0.54%	1.25%	3.69%	5.51%	8.63%	11.58%	12.74%
Downside Deviation	0.00%	0.66%	1.17%	2.79%	3.69%	7.00%	7.39%
Max. Monthly Pain	0.44%	-1.15%	-1.22%	-2.86%	-4.19%	-9.47%	-9.87%
Max. Draw Down	0.00%	-1.15%	-1.35%	-5.17%	-5.34%	-13.74%	-13.70%