

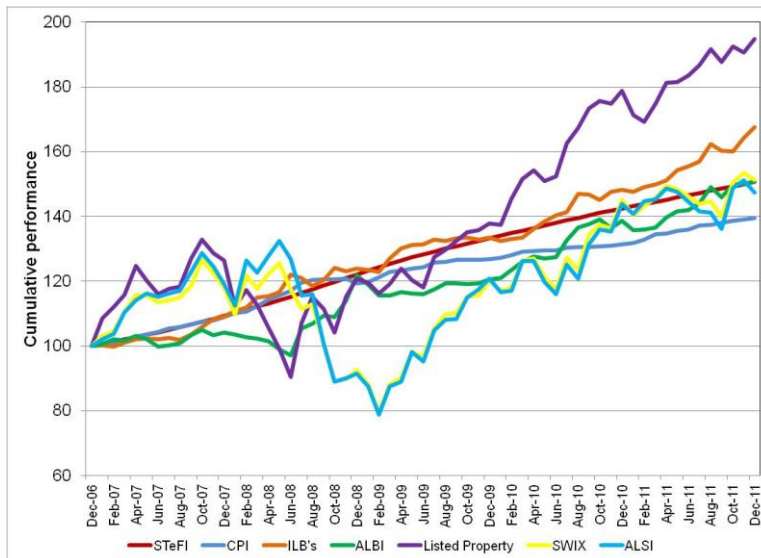
Local Market Summary

31 December 2011

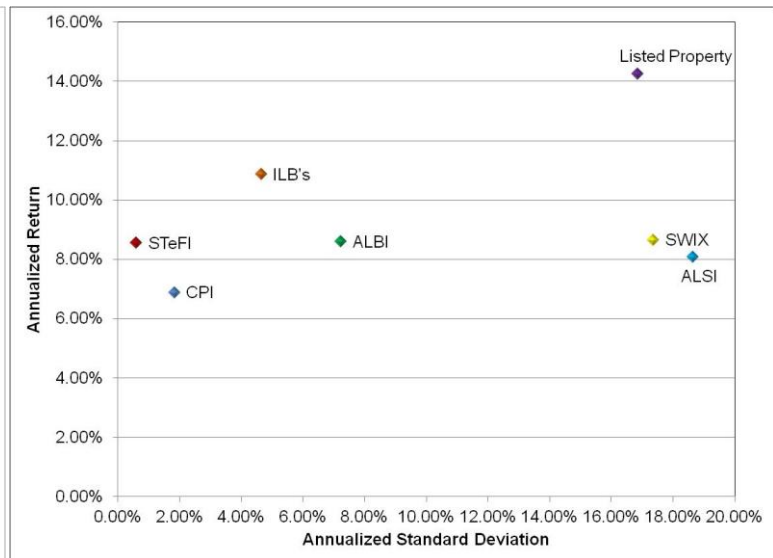
Absolute Performance

Period	STeFI	CPI	ILB's*	ALBI	Listed Property	SWIX	ALSI
1 month	0.47%	0.25%	2.03%	0.72%	2.10%	-1.38%	-2.45%
2 months	0.92%	0.50%	4.61%	0.74%	1.14%	0.55%	-0.89%
3 months	1.39%	1.01%	4.47%	3.51%	3.73%	8.26%	8.38%
6 months	2.82%	2.48%	7.65%	6.41%	6.00%	3.62%	2.05%
9 months	4.25%	3.72%	11.73%	10.56%	11.34%	3.85%	1.43%
1 year	5.73%	6.20%	13.05%	8.82%	8.93%	4.26%	2.57%
2 years	6.33%	4.83%	12.01%	11.85%	18.82%	12.26%	10.47%
3 years	7.25%	5.33%	10.54%	7.40%	17.22%	17.86%	17.26%
4 years	8.35%	6.36%	11.30%	9.72%	11.37%	6.41%	5.47%
5 years	8.55%	6.88%	10.87%	8.59%	14.25%	8.65%	8.08%

60 months Cumulative Performance



60 months Risk Return Comparison



Calendar Year

Period	STeFI	CPI	ILB's*	ALBI	Listed Property	SWIX	ALSI
2007	9.35%	8.98%	9.16%	4.21%	26.52%	18.06%	19.18%
2008	11.69%	9.51%	13.62%	16.98%	-4.47%	-21.67%	-23.25%
2009	9.13%	6.33%	7.66%	-0.98%	14.07%	29.92%	32.13%
2010	6.93%	3.48%	10.97%	14.96%	29.62%	20.86%	18.98%
2011	5.73%	6.20%	13.05%	8.82%	8.93%	4.26%	2.57%

60 months Absolute Risk Comparison

Risk statistics	STeFI	CPI	ILB's*	ALBI	Listed Property	SWIX	ALSI
Standard Deviation	0.60%	1.83%	4.65%	7.23%	16.86%	17.36%	18.65%
Upside Deviation	0.60%	1.66%	3.92%	5.77%	11.66%	10.86%	11.78%
Downside Deviation	0.00%	0.52%	1.35%	2.70%	8.24%	9.55%	10.32%
Max. Monthly Pain	0.44%	-1.15%	-2.08%	-2.86%	-11.19%	-11.92%	-13.24%
Max. Cumulative Pain	0.00%	-1.15%	-2.85%	-7.34%	-31.87%	-36.98%	-40.45%

*ILB's: BEASSA Inflation Linked Bonds

Source: iNet Bridge & StatsOnline