

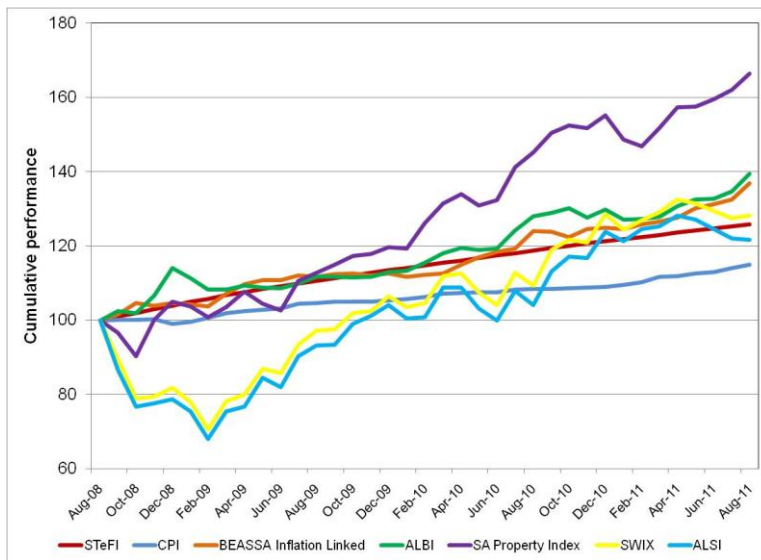
Local Market Summary

31 August 2011

Calendar Year

	STeFI	CPI	Inflation Linked Bonds	ALBI	SA Property	SWIX	ALSI
2007	9.35%	8.98%	9.16%	4.21%	26.52%	18.06%	19.18%
2008	11.69%	9.51%	13.62%	16.98%	-4.47%	-21.67%	-23.25%
2009	9.13%	6.33%	7.66%	-0.98%	14.07%	29.92%	32.13%
2010	6.93%	3.48%	10.97%	14.96%	29.62%	20.86%	18.98%
2011	3.81%	5.41%	9.55%	7.38%	7.28%	-0.38%	-1.82%

36 months Cumulative Performance



36 months Risk Return Comparison



Absolute Performance

	STeFI	CPI	Inflation Linked Bonds	ALBI	SA Property	SWIX	ALSI
1 month	0.47%	0.85%	3.39%	3.49%	2.76%	0.48%	-0.32%
2 months	0.95%	1.72%	4.32%	5.01%	4.40%	-1.00%	-2.31%
3 months	1.41%	2.15%	5.25%	5.17%	5.62%	-2.51%	-4.29%
4 months	1.89%	2.68%	7.34%	6.68%	5.73%	-3.29%	-5.03%
6 months	2.85%	4.21%	8.90%	9.63%	13.33%	0.97%	-2.39%
9 months	4.33%	5.59%	9.93%	9.24%	9.68%	6.01%	4.27%
1 year	5.99%	6.06%	10.38%	9.00%	14.55%	17.16%	16.88%
2 years	6.65%	4.77%	10.71%	11.75%	21.51%	14.76%	14.24%
3 years	7.97%	4.75%	11.04%	11.72%	18.50%	8.60%	6.75%
4 years	8.72%	6.92%	12.36%	10.23%	12.80%	5.89%	4.81%
5 years	8.71%	6.87%	10.98%	9.78%	17.59%	11.25%	10.08%

36 months Absolute Risk Comparison

Risk statistics	STeFI	CPI	Inflation Linked Bonds	ALBI	SA Property	SWIX	ALSI
Standard Deviation	0.59%	1.57%	4.38%	6.81%	12.02%	18.48%	19.91%
Upside Deviation	0.59%	1.30%	3.84%	5.48%	8.73%	11.30%	12.21%
Downside Deviation	0.00%	0.66%	1.00%	2.59%	5.21%	10.66%	11.60%
Max. Monthly Pain	0.44%	-1.15%	-1.22%	-2.86%	-6.58%	-11.92%	-13.24%
Max. Draw Down	0.00%	-1.15%	-1.35%	-5.17%	-9.63%	-29.36%	-31.99%