

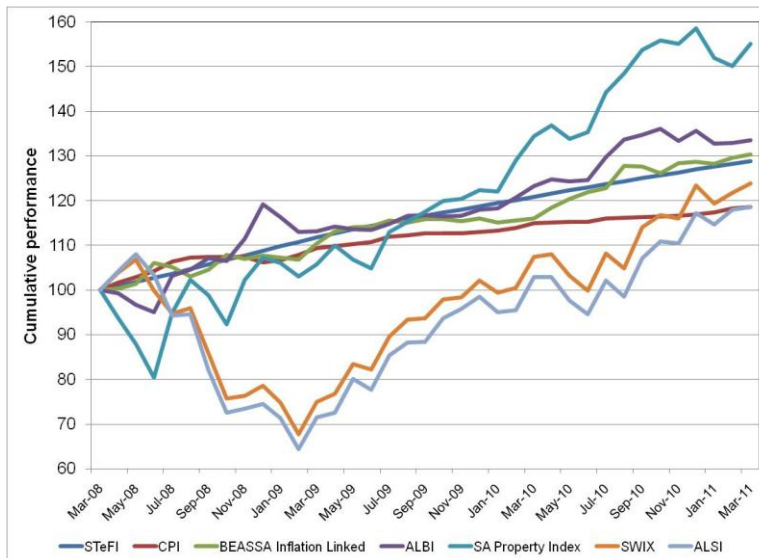
# Local Market Summary

31 March 2011

## Calendar Year

	STeFI	CPI	Inflation Linked Bonds	ALBI	SA Property	SWIX	ALSI
2007	9.35%	8.98%	9.16%	4.21%	26.52%	18.06%	19.18%
2008	11.69%	9.51%	13.62%	16.98%	-4.47%	-21.67%	-23.25%
2009	9.13%	6.33%	7.66%	-0.98%	14.07%	29.92%	32.13%
2010	6.93%	3.48%	10.97%	14.96%	29.62%	20.86%	18.98%
2011	1.42%	1.46%	1.19%	-1.57%	-2.16%	0.40%	1.12%

## 36 months Cumulative Performance



## 36 months Risk Return Comparison



## Absolute Performance

	STeFI	CPI	Inflation Linked Bonds	ALBI	SA Property	SWIX	ALSI
1 month	0.48%	0.31%	0.58%	0.49%	3.35%	1.77%	0.52%
2 months	0.92%	1.01%	1.62%	0.58%	2.11%	3.81%	3.34%
3 months	1.42%	1.46%	1.19%	-1.57%	-2.16%	0.40%	1.12%
4 months	1.93%	1.64%	1.53%	0.14%	0.02%	6.85%	7.38%
6 months	3.00%	2.00%	2.09%	-0.83%	0.90%	8.56%	10.69%
9 months	4.73%	2.82%	6.82%	7.14%	14.69%	24.12%	25.40%
1 year	6.54%	3.19%	12.31%	8.34%	15.43%	15.38%	15.15%
2 years	7.34%	4.15%	8.64%	8.68%	21.11%	28.54%	28.81%
3 years	8.81%	5.85%	9.23%	10.13%	15.77%	7.41%	5.84%
4 years	9.09%	7.01%	10.38%	7.67%	10.86%	7.12%	7.13%
5 years	8.83%	6.83%	9.90%	7.25%	12.99%	12.25%	12.64%

## 36 months Absolute Risk Comparison

Risk statistics	STeFI	CPI	Inflation Linked Bonds	ALBI	SA Property	SWIX	ALSI
Standard Deviation	0.62%	2.03%	5.03%	8.37%	18.06%	19.26%	20.88%
Upside Deviation	0.62%	1.82%	4.21%	6.87%	13.16%	11.19%	12.15%
Downside Deviation	0.00%	0.66%	1.53%	2.96%	8.02%	11.23%	12.40%
Max. Monthly Pain	0.44%	-1.15%	-2.08%	-2.86%	-8.71%	-11.92%	-13.24%
Max. Draw Down	0.00%	-1.15%	-2.85%	-5.17%	-19.65%	-36.53%	-40.45%