

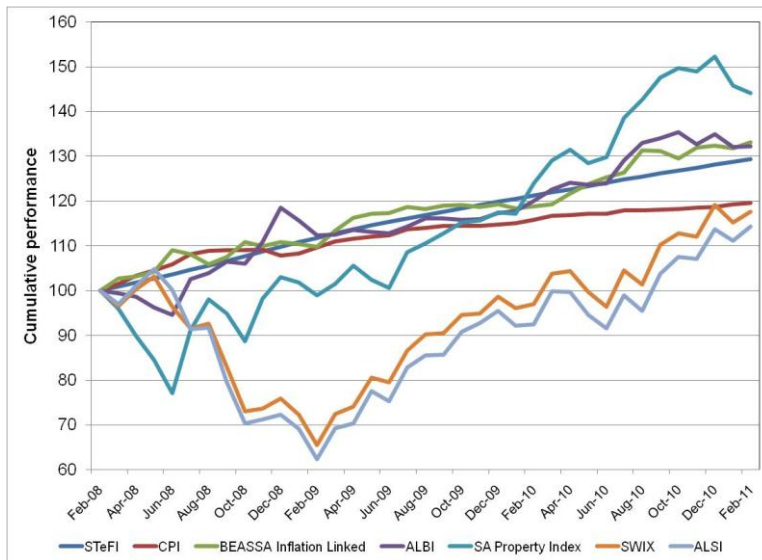
Local Market Summary

28 February 2011

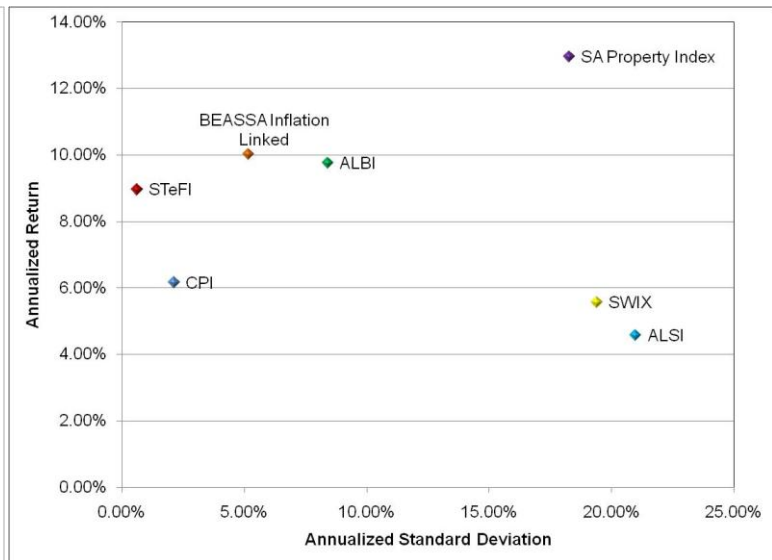
Calendar Year

	STeFI	CPI	Inflation Linked Bonds	ALBI	SA Property	SWIX	ALSI
2007	9.35%	8.98%	9.16%	4.21%	26.52%	18.06%	19.18%
2008	11.69%	9.51%	13.62%	16.98%	-4.47%	-21.67%	-23.25%
2009	9.13%	6.33%	7.66%	-0.98%	14.07%	29.92%	32.13%
2010	6.93%	3.48%	10.97%	14.96%	29.62%	20.86%	18.98%
2011	0.93%	0.74%	0.60%	-2.05%	-5.34%	-1.35%	0.59%

36 months Cumulative Performance



36 months Risk Return Comparison



Absolute Performance

	STeFI	CPI	Inflation Linked Bonds	ALBI	SA Property	SWIX	ALSI
1 month	0.44%	0.30%	1.03%	0.09%	-1.20%	2.01%	2.80%
2 months	0.93%	0.74%	0.60%	-2.05%	-5.34%	-1.35%	0.59%
3 months	1.44%	0.92%	0.94%	-0.35%	-3.22%	4.99%	6.82%
4 months	1.96%	1.10%	2.74%	-2.33%	-3.70%	4.22%	6.34%
6 months	3.06%	1.37%	1.36%	-0.57%	1.08%	16.03%	19.75%
9 months	4.81%	2.10%	7.59%	6.91%	12.15%	17.96%	20.80%
1 year	6.68%	3.30%	12.09%	10.08%	16.32%	21.22%	23.57%
2 years	7.56%	4.47%	10.11%	8.43%	20.67%	34.01%	35.37%
3 years	8.96%	6.16%	10.02%	9.76%	12.96%	5.56%	4.57%
4 years	9.15%	7.05%	10.53%	7.42%	10.82%	8.19%	8.66%
5 years	8.85%	6.79%	10.08%	7.10%	13.83%	13.37%	14.08%

36 months Absolute Risk Comparison

Risk statistics	STeFI	CPI	Inflation Linked Bonds	ALBI	SA Property	SWIX	ALSI
Standard Deviation	0.62%	2.13%	5.16%	8.41%	18.28%	19.40%	20.99%
Upside Deviation	0.62%	1.92%	4.33%	6.90%	13.25%	11.28%	12.18%
Downside Deviation	0.00%	0.66%	1.53%	2.95%	8.13%	11.21%	12.35%
Max. Monthly Pain	0.44%	-1.15%	-2.08%	-2.86%	-8.71%	-11.92%	-13.24%
Max. Draw Down	0.00%	-1.15%	-2.85%	-5.40%	-22.86%	-36.53%	-40.45%